

HR150/HR151 Series Tanker Mounted Cartwheel Hosereels

The HR150/HR151 series of hosereels are suitable for petroleum products. They can be rewound via hydraulic or manual rewind mechanisms and can suit different sized hose diameters.

The HR150/HR151 series is designed and built to operate in harshest conditions. The robust construction allows for safe operation and longevity.

Key Features

- Flow area is equal to 38mm throughout.
- All components are easily replaced as required.
- Sealing is by lip seal.
- Can be manually or hydraulically operated - hydraulic ready (no motor as standard).
- Self aligning bearing for effortless and fast rewinding.
- Stiffened cheek plates for robust operation and prevents catching of hose beads.
- Extremely sturdy ductile iron manifold with added strength from steel inner drum.
- Steel base frame allows for standard or inverted mounting.
- Can suit different sized hose diameters.
- All models incorporate an optional lock.
- Can be supplied with rollers and guides installed (available upon request - contact LIQUIP).



HR151-LM model shown



HR152-LM model shown

Available upon request

Technical Information

HR150/HR151 Hosereel Series			
Pressure tested & rating	Up to 2,100 kPa	Rewind Options	Manual Hydraulic
Periodic Service	Quarterly grease plummer block bearing.	Materials	-Aluminium cheek plates -Mild steel drum -SG iron manifold, -Polyurethane seals (Nitrile as option)
Mounting	4 x M10 Bolts - see mounting footprint on following pages. A Frame supplied in "LM" variants.		Can suit the following diameter hose: 25mm (1") 32mm (1¼") 38mm (1½")
Operation	Un-hook nozzle and dispense hose to the required location. To rewind the hose, a hydraulic motor is used (supplied separately). The hose nozzle storage (supplied separately) can be fitted with interlocks to help prevent drive away accidents and product spills.	Variants	

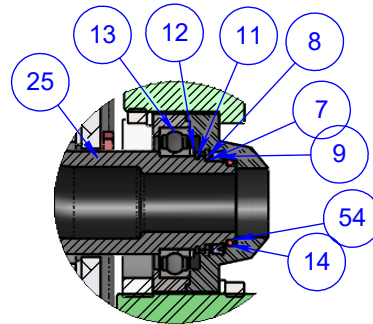
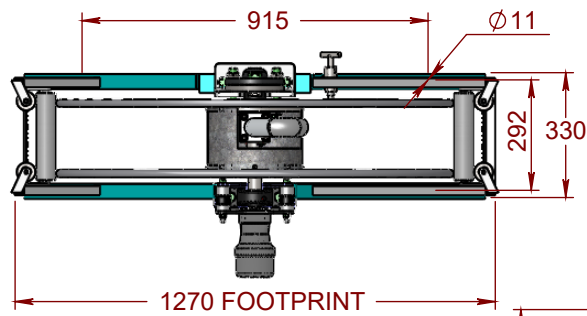
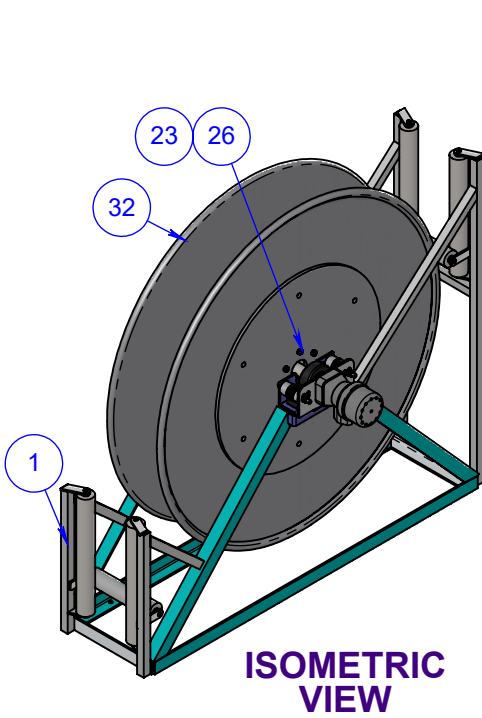
Ordering Information

- **HR151-LM:** Hosereel Cartwheel (No Motor, No Rollers or guides) - Hydraulic Ready.
- **HR152-LM :** Hosereel Hydraulic Cartwheel with rollers and guides - Hydraulic Ready (Available upon request).

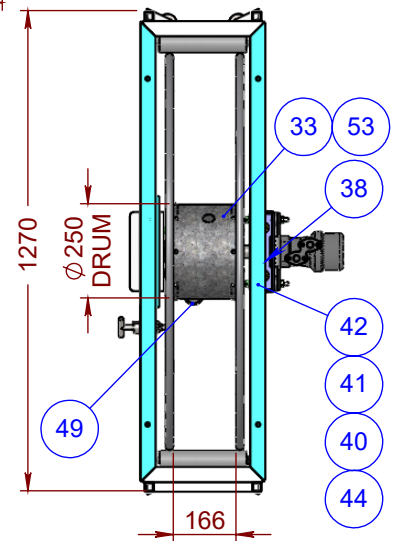
Associated Equipment

- **AHR250D:** Aviation drum style hose reel.
- **AHR250:** Aviation Cartwheel type hosereels.
- **295SACJ-0200:** Aviation spec nozzle.
- Please **CONTACT LIQUIP** for all further models or information.

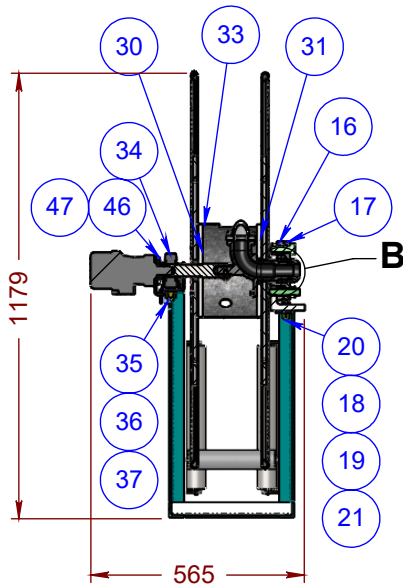
HR150 Series Tanker Mounted Cartwheel Hosereels



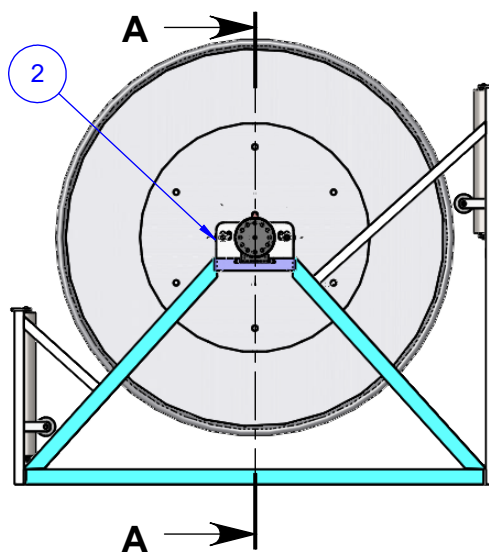
**DETAIL B
SCALE 1 : 4**



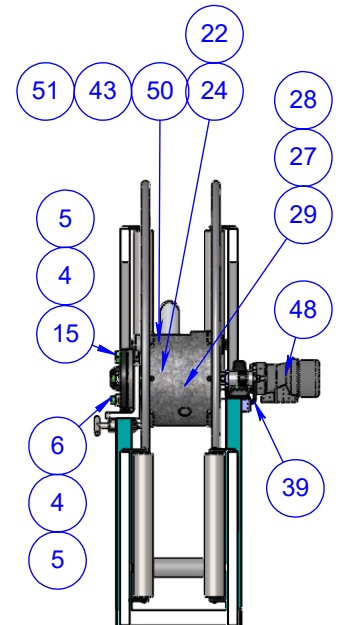
TOP VIEW



SECTION A-A



SIDE VIEW



FRONT VIEW

HR150 Series Tanker Mounted Cartwheel Hosereels

ITEM NO.	PART NUMBER	DESCRIPTION	HR150	HR150-LM	MATERIAL
1	HR150-2	FRAME ASSEMBLY	1	1	STEEL
2	HR150-1	BRACKET INLET	1	1	STEEL
3	3362	LOCTITE	1	1	LOCTITE
4	5348	WASHER SPRING	4	4	Z/P STEEL
5	4396	NUT METRIC THIN	4	4	Z/P STEEL
6	6715	STUD METRIC	3	3	Z/P STEEL
7	R12HP-9	BACKING RING SEAL	1	1	MILD STEEL
8	4339	CIRCLIP INTERNAL	1	1	STEEL
9	4516	SEAL LIP HOSEREEL	1	1	URETHANE
10	7955	LOCTITE	1	1	CYANOACRYLATE
11	4338	CIRCLIP EXTERNAL METRIC	1	1	Z/P STEEL
12	R12HP-22	SPACER BEARING	1	1	STEEL
13	4515	BEARING BALL DEEP GROOVE	1	1	STEEL
14	4547	O-RING	1	1	VITON A
15	6707	SETSCREW METRIC	1	1	Z/P STEEL
16	R12HP-12	FLANGE SUPPORT BEARING	1	1	STEEL
17	R12HP-13	SEAL FLANGE	1	1	STEEL
18	4971	NUT METRIC	2	2	Z/P STEEL
19	5280	WASHER SPRING	2	2	Z/P STEEL
20	6720	SETSCREW METRIC	2	2	Z/P STEEL
21	5266	WASHER FLAT	2	2	Z/P STEEL
22	4395	NUT NYLOC	3	3	Z/P STEEL
23	6586	WASHER SPRING	9	9	ST STEEL
24	6656	BOLT METRIC	3	3	ST STEEL
25	R12-36	MANIFOLD	1	1	SG IRON
26	6585	SETSCREW METRIC	6	6	ST STEEL
27	4981	NUT NYLOC	1	1	Z/P STEEL
28	0813	WASHER FLAT	1	1	ST STEEL
29	6718	CAPSCREW METRIC	1	1	STEEL
30	HR150-9	BEARING SUPPORT TUBE	1	1	STEEL
31	HR150-10	DRUM SUPPORT	1	1	STEEL
32	HR150-12A	CHEEKPLATE & SUPPORT PLATE	2	2	ALUMINIUM
33	HR150-17	DRUM	1	1	2mm STEEL
34	4523	BEARING PILLOW BLOCK	1	1	S.G. IRON
35	6705	SETSCREW METRIC	2	2	Z/P STEEL
36	5359	WASHER SPRING	2	2	Z/P STEEL
37	1076	NUT METRIC	2	2	Z/P STEEL
38	5720	CAP/PLUG	1	1	PVC RED
39	HR12HP-3	BRACKET MOTOR MOUNT	1	1	STEEL
40	HR12HP-18	SPACER	2	2	STEEL
41	R12HP-14	RUBBER MOUNT	2	2	STEEL/ RUBBER
42	HR150-4	SPACER FOR MOTOR MOUNT	2	2	MILD STEEL
43	0109	WASHER SPRING	8	8	Z/P STEEL
44	0130	NUT HEX	4	4	Z/P STEEL
45	3361	LOCTITE	1	-	CYANOACRYLATE
46	0020	SETSCREW HEX	4	-	Z/P STEEL
47	0102	WASHER FLAT	4	-	Z/P STEEL
48	1295	MOTOR HYDRAULIC DANFOSS	1	-	STEEL
49	R12-11	GOOSENECK 1½" MBSPT	1	1	STEEL
50	719	CAPSCREW IMPERIAL	4	4	Z/P STEEL
51	0664	GASKET	1	1	NBR CORK
52	HR150-8	LOCK ASSY	1	1	STEEL
53	6714	HAMMER DRIVE SCREW	14	14	Z/P STEEL
54	R12-39	SHIM	1	1	ST STEEL