

# PANTOGRAPH LOADING ARM

Pantograph top loading arms are a very commonly used style of top load arm all around the world.

Liquip specialise in offering balanced pantograph arms for superior strength and stability. Pantograph arms are a simple and affordable design for medium duty applications.



Pantograph Loading Arm

## Features and Benefits

- Medium reach loading arms for ease of loading.
- Unique design allows for high flow rates to be achieved.
- Easily access a single sided loading bay.
- Vacuum breakers are available to assist drainage of the loading arm.
- Uses Liquip's unique gas strut "Velvet Touch" technology.
- Loading arms are available in 3" and 4" sizes.

## Technical Information - Pantograph Loading Arm

Pantograph Loading Arm			
Materials	Carbon steel / Aluminium / (Stainless Steel on request).	Typical Reach	600mm Up to 3,000mm. (Longer horizontal reach is possible but dependent on design). Contact Liquip for assistance.
Design Pressure	1,000 kPa.	End connections	Balance Mechanism Inlet - 4" (DN100) ASME 150 RF flange. Outlet Coupling - API Coupler
Test Pressure	1,500 kPa.	Counter balance type	Single or Dual gas struts.
Flow Rates	Typical flow rates are up to 1,500 LPM.	Primary seal materials	Viton™ Teflon™ and FFKM (Others on request).
Temperature limits	-28°C to +90°C (-18°F to +200°F) - GFLT seals.	Dust seal material	Buna Nitrile or HAN. (Others on request).
Range of motion	Horizontal 360°, Vertical +70° to -10°.	Gasket material	Klinger or Viton™ A. (Others on request).

## Ordering Information

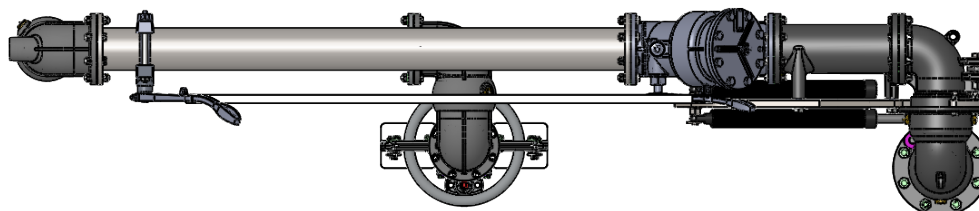
Loading arm survey forms are available for users to fill out. Survey forms detail all technical requirements for your loading arm needs. These forms can be downloaded once you login to the Liquip website.

Alternatively, you can contact Liquip to receive a loading arm survey form and discuss any specific requirements you may have.

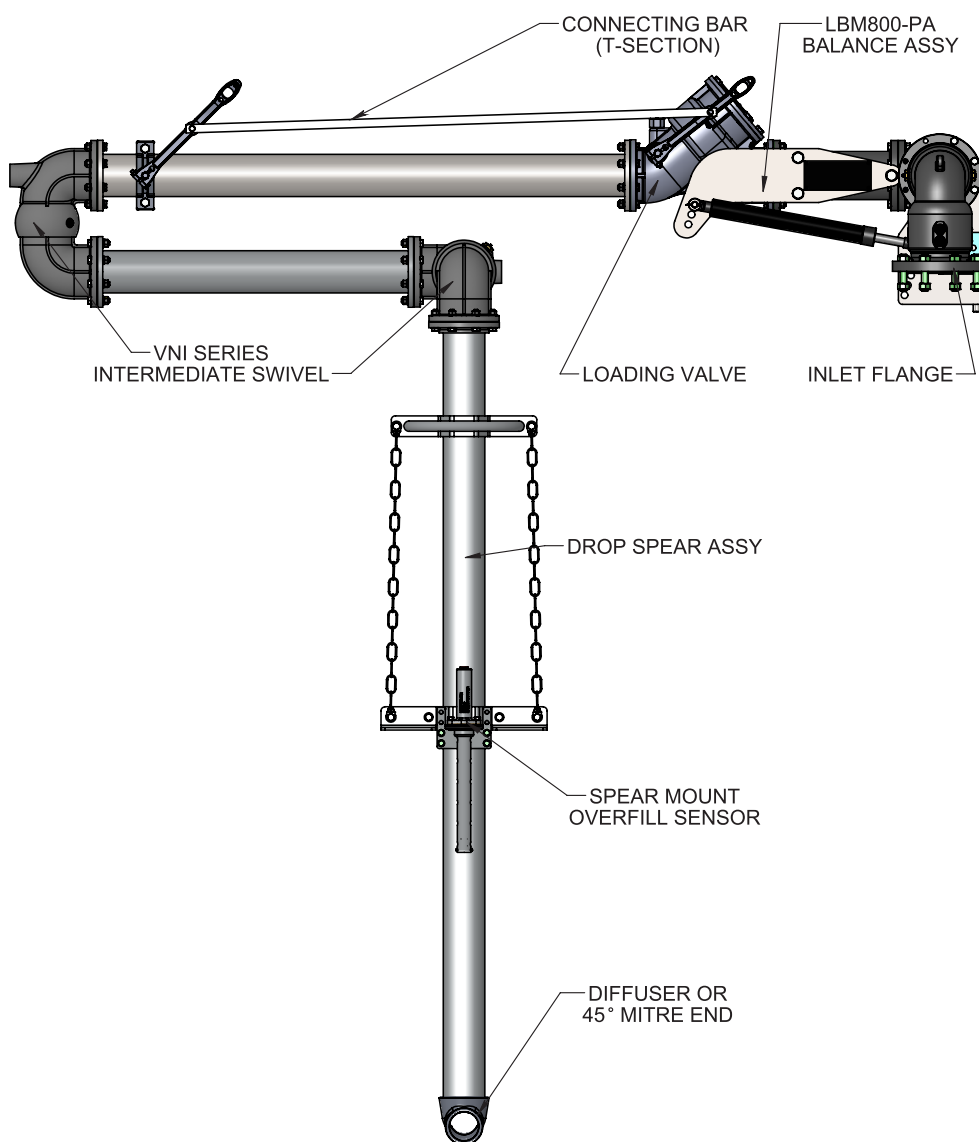
## Associated Equipment

Riser Pipes	As Required	Drop Hose Covers	3576, 3577, 4683, 4748
Balance Assembly	LBM800	Straight Swivels	VNS-A4, VNS-A4AVI
Gas Struts	4416 or 3008	Coupler Swivels	VNC-A4VG, VNC-A4AVI, VNC-A4DVG, VNC-A4T,
Horizontal Spool	L219A Series	Spacer Spools	VSA4, VSS4
Intermediate Swivels	VNI-A4VG, VNI-A4AVI	Butterfly Valves	LBV450VGx
Drop Spools	L220A Series or As Required.	Sightglasses	API-SG-150, BF4-SG-xxx
Drop Hoses	5639P	API/LYNX Series Coupler	LYNX85xxx, LYNX86xxx

# PANTOGRAPH LOADING ARM TECHNICAL SPECIFICATIONS



TOP VIEW



SIDE VIEW